

TO THE
FIRE TRAILS

Eastern
Shaft



Welcome to
HERBERTON MINING MUSEUM
and the
GREAT NORTHERN MINE

GREAT
NORTHERN
MINE WALK

No.3
Shaft

Gully
Shaft

Prospector's Gully

Rock
Drilling

Tin
Panning

The Workshop

Stamps and Jigs
Display

The
Dinnerbell
Mine

CAR PARK

The
Geological
Timeline Wall

Water
Power
Display

ENTRY

THE HERBERTON
MINING MUSEUM

The Gordon
Gardens

The Risley Sculpture

Amphitheatre

THE WOMEN'S CHAIR WALK

The Women's
Chair

The Cenotaph

THE EXPLORERS WAY

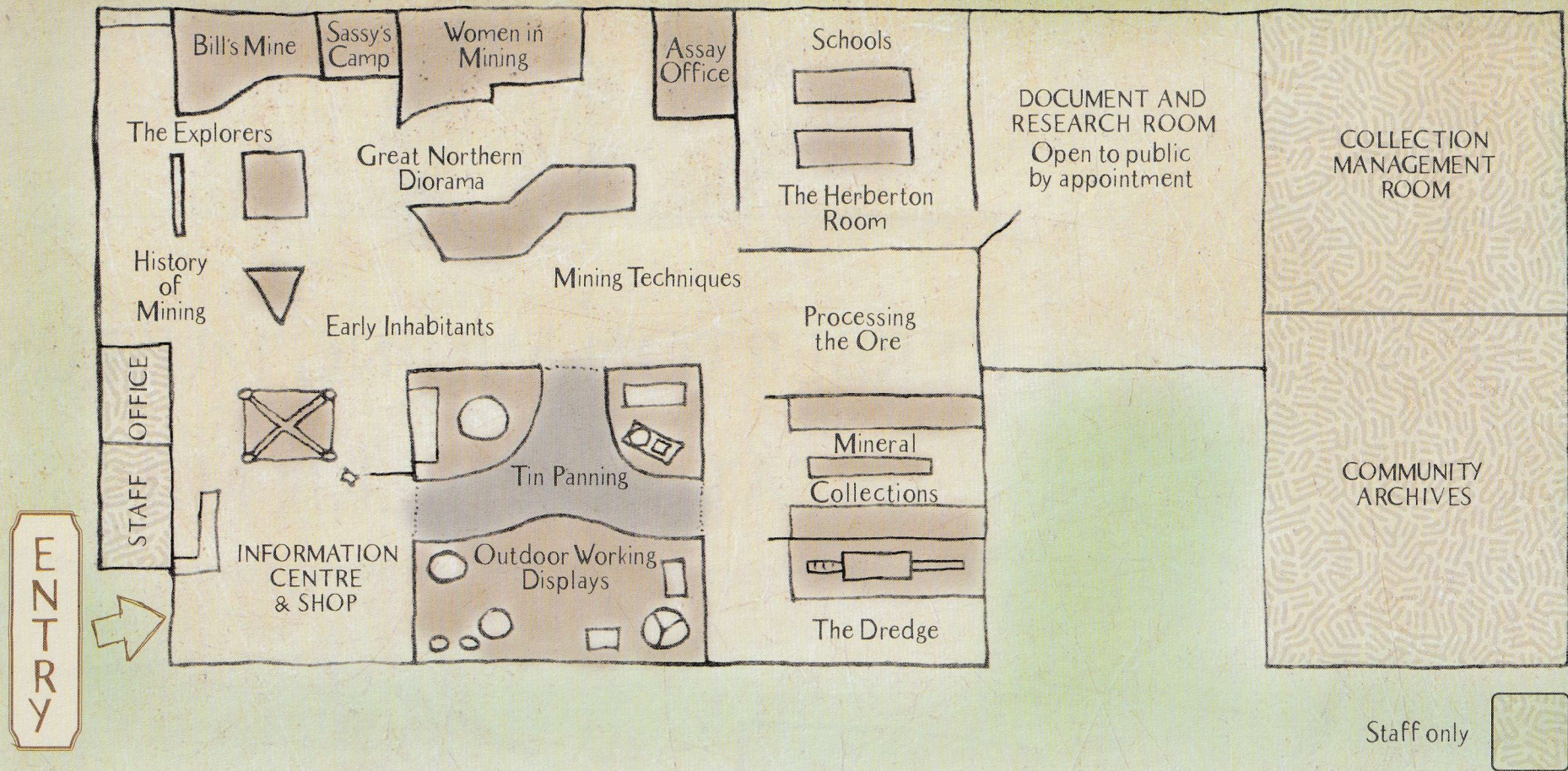
JACK'S ROAD

START
HERITAGE
WALK
HERE

to shops
GRACE STREET



Not to scale



The Great Northern Mine was once the heart of a booming tin industry...and it boomed in more ways than one! Herberton's hills regularly rang with dynamite explosions, while the racket of machinery at the Great Northern Battery was an incessant backdrop to everyday life.

Today the Herberton Mining Museum is a relaxing retreat among towering gums on the original 24ha mine site and houses stories of those early days.

On The Outside

From here take the Great Northern Mine Walk — an interpreted trail through the original mine workings and the start of the Herberton Fire Trails. Or venture through the Gordon Gardens, past our Risley sculpture to the start of the Herberton Heritage Walk, a self-guided tour of the town's historic buildings. Our volunteers have a map of the walking trails, or download our Heritage Walk app.

Step Inside

Dig into the past in our museum. Push our buttons and crank our handles! You can pan for tin, pump your own water and use a hand drill to make holes for your explosives! Talk to our volunteers about our extensive archives and discover your family history. Look up, look down and search every corner...this museum is an explorer's dream!

We hope you enjoy your visit!



07 4096 3474

1 Jack's Road, Herberton Qld 4887

herbertonvc@trc.qld.gov.au

herbertonvisitorcentre.com.au



Herberton Mining Museum

